



XR620 Compact Telehandler

Technical Specifications



Capacity: 6,000 lbs
Lift Height: 20'
Forward Reach: 13'
Chassis Sway
World Class 360° Visibility

(702) 636-2969
(800) 497-1704

1415 W. Bonanza Rd., Las Vegas, NV 89106
www.XtremeManufacturing.com

10-5-3-2
WARRANTY

Performances



Capacity	6,000 lbs
Lift Height	20'
Forward Reach	13'
Frame Leveling L/R	6°
Operating Weight	13,200 lbs

Power Train



Engine	Perkins 85 hp Tier III
Fuel Capacity	24 gal
Transmission	Linde Hydrostatic
Axle	Carraro
Brakes	Inboard Wet Disc
Parking Brake	SAHR

Tires



Tires (Standard Eq)	Foam Fille 12 x 16.5
---------------------	-------------------------

Hydraulics



GPM	28
PSI	3,500
Hydraulic Oil Capacity	21 gal

Dimensions

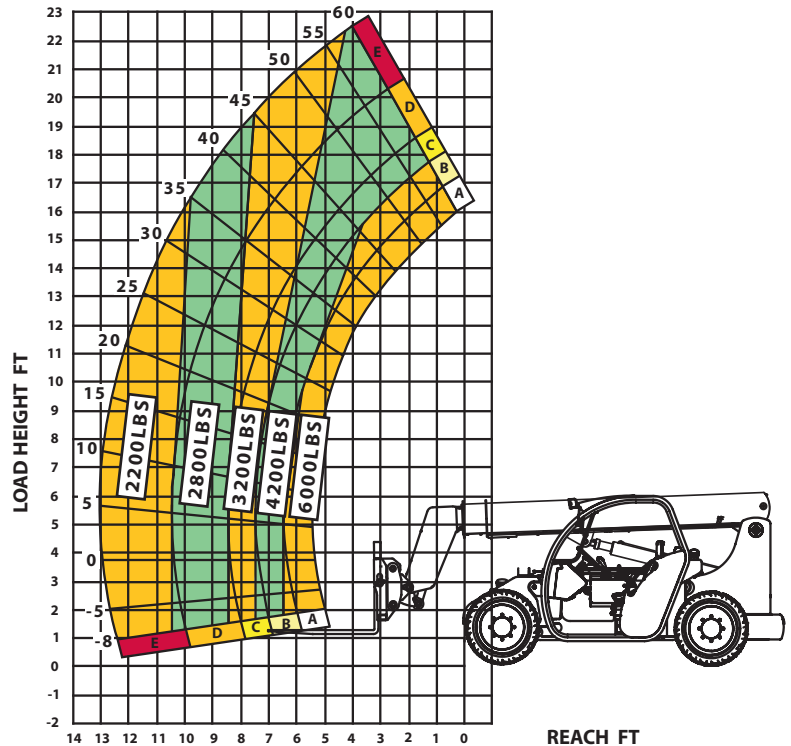


Length to fork face	15'4"
Width	73"
Height	75"
Wheel Base	94"
Ground Clearance	11"
Turning Radius	10'

Standard Equipment



- Heavy-duty Frame/Chassis and Boom
- Melonite Pins
- Auxillary Hydraulics
- Direct Dual Control Hydraulic Valve Actuation
- Robust Wiring, No Spades, No Pins
- Side Mounted Engine
- Full-time Planetary 4-Wheel Drive
- Steering - 4-Wheel Circle, Crab, 2-Wheel Front
- Back-Up Alarm
- Open ROPS
- Chassis Sway
- Hydrostatic Drive
- Suspension Seat
- Quick Attach
- Xtreme Service Accessibility



Attachments



- Carriages
- Pallet Forks
- Lumber Forks
- Utility Bucket
- Concrete Bucket
- Truss Boom
- Grapple

Accessories and Options



- Cab Enclosed
- Limited Slip Differential
- A/C
- 4th Steer Mode, Rear Pivot
- Work Light Package
- Rotating Beacon

Constant improvement and engineering progress make it necessary that we reserve the right to make specification, equipment and price changes without notice.