

XR1270 Roller Boom

Technical Specifications

XTREME
MANUFACTURING

Capacity: 12,000 lbs
Lift Height: 70'
Forward Reach: 53'8"
Power Shift Transmission
World Class 360° Visibility

**World's
Highest
Reach
70 Feet**

Heavy Duty Rollers
for Long Life and Low
Maintenance

Dual Hydraulic
Cylinders for Precision
Fork Leveling

XTREME

TELEHANDLERS

10-5-3-2
WARRANTY

1415 W. Bonanza Rd., Las Vegas, NV 89106
www.XtremeManufacturing.com

(702) 636-2969
(800) 497-1704

Performances

	Capacity	12,000 lbs
	Lift Height	70'
	Forward Reach	53'8"
	Frame Leveling L/R	8°
	Operating Weight	46,600 lbs

Power Train

	Engine	Perkins 130 hp Tier III
	Fuel Capacity	72 gal
	Transmission	Dana 3-speed
	Axle	Dana
	Brakes	Inboard Wet Disc
	Parking Brake	SAHR


Tires

	Tires (Standard Eq)	Foamed Filled
		17.5 x 25 E3


Hydraulics

	GPM	49
	PSI	4,000
	Hydraulic Oil Capacity	58 gal

Dimensions

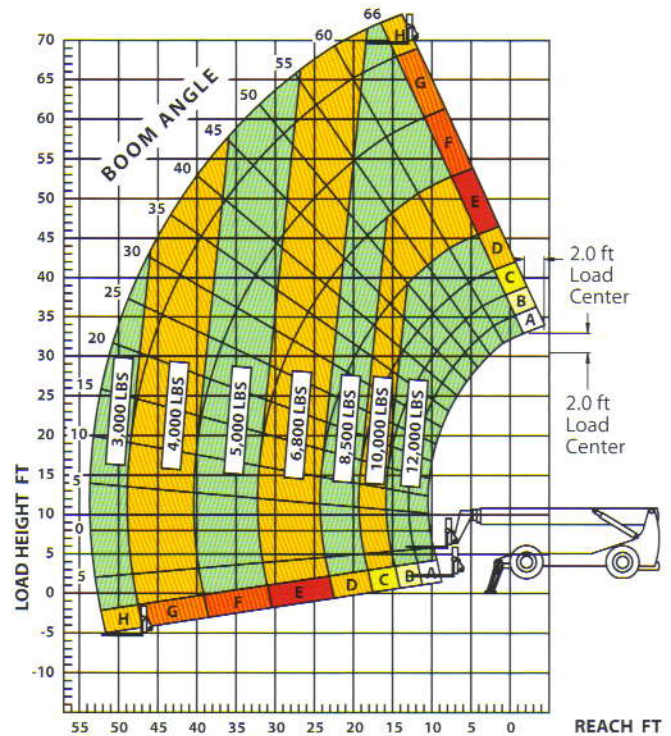
	Length to fork face	26'6"
	Width	102"
	Height	8'11"
	Wheel Base	147"
	Ground Clearance	15"
	Turning Radius	15'10"

Standard Equipment


	Heavy-duty Frame/Chassis and Roller Boom
	Melonite Pins and Rollers
	Auxiliary Hydraulics
	Direct Dual Control Hydraulic Valve Actuation
	Robust Wiring, No Spades, No Pins
	Rear Axle Stabilization (RAS)
	Center Inline Engine Drive Train
	Full-time Planetary 4-Wheel Drive
	Steering - 4-Wheel Circle, Crab, 2-Wheel Front
	Back-Up Alarm
	Open ROPS
	Suspension Seat
	Quick Attach (Common Fit)
	Xtreme Service Accessibility

XR1270 LOAD CHART - Outriggers Lowered


Standard Fork Carriage / Foam Filled Tires



Attachments

	Standard Carriage - 48" or 72"
	+ 10° Side Tilt Carriage - 48" or 72"
	+ 45° Swing Carriage - 52" or 72"
	Pallet Forks - 2.25" x 4" x 48"
	Lumber Forks - 1.75" x 7" x 60"
	Block Forks - 2" x 2" x 48"
	Utility Bucket - 1.25 cu yd
	Concrete Hopper - 0.5 cu yd, or 1.00 cu yd
	Truss Boom - 12' or 15'
	Wallboard/Sheet Material Handler

Accessories and Options

	Cab Enclosed
	Limited Slip Differential
	17.5 x 25 G2 Tires
	A/C
	4th Steer Mode, Rear Pivot
	Work Light Package
	Rotating Beacon
	Pintle Hook
	Running lights, brake & turn signals

Long-Life Rollers



Xtreme 360° Visibility



Operator Controls



Boom Angle Indicator



Constant improvement and engineering progress make it necessary that we reserve the right to make specification, equipment and price changes without notice.

(702) 636-2969
(800) 497-1704

1415 W. Bonanza Rd., Las Vegas, NV 89106
www.XtremeManufacturing.com